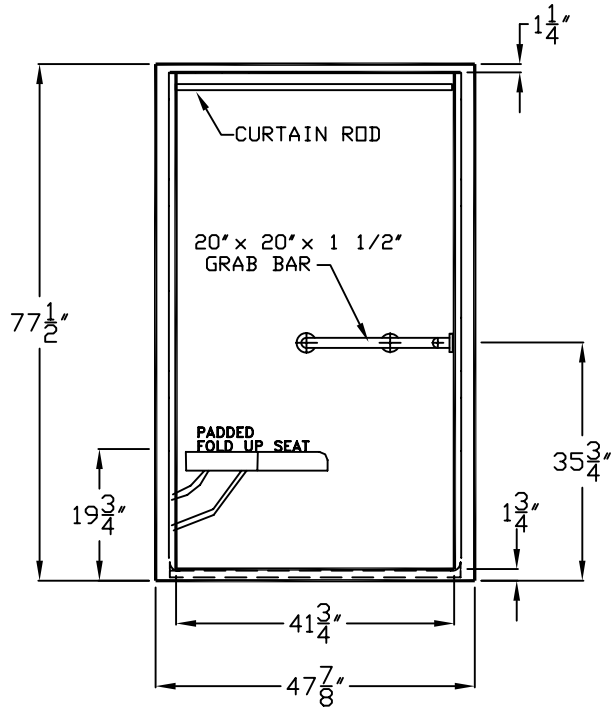
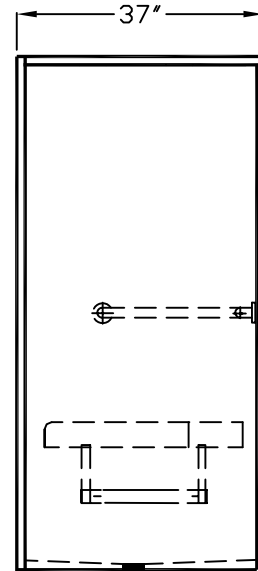


SPECIAL NEEDS SERIES SUBMITTAL DATA

FRONT VIEW



SIDE VIEW



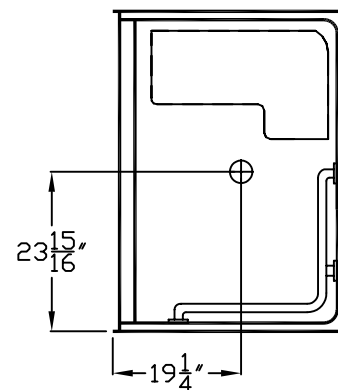
Accessible Shower Stall

The shower enclosure shall be Aquarius Model G 4897BF right or left. Finished surface shall be of sanitary-grade ployester Gelcoat exhibiting a minimal thickness of 15 dry mils, and a finished cured Barcoal hardness of 80-90 as tested with ASTM D-2583 construction shall be of molded reinforced fiberglass with a 15% minimum fiberglass content. The unit shall have outside dimensions of 47 7/8" X 37" X 77 1/2" with 1 3/4" threshold. The base shall be attached to the sump of the unit in such a manner to form an integral part with an inner and outer coating of reinforced polyester resin. The unit shall meet ANSI 124.2, FHA, HUD, BOCA, NAHB, UPC, and shall meet the requirements of Southern Building Code.

The enclosure shall be equipped with the following factory installed accessories:
 1) one 20" X 20" x 1 1/2" diameter wrap bar opposite the fold up seat, being 18 gauge stainless steel with 1 1/2" statute clearance, mounted with stainless steel bolts and secured and water proofed from the rear, 2) padded fold up seat mounted from the rear through a fiberglass encased board, and secured by 3" x 3" plates sealed and water proofed 3) 1" diameter 20 gauge stainless steel curtain rod.
 4) brass drain with chrome strainer.

Available options: 1) Hand held shower set (Includes: hand set, 60" flex hose, swivel connector, vacuum breaker, brass nipple, locknut, wall brackets and shower wall outlet), 2) Pressure balance valve, 3) Green anti-bacterial shower curtain and hooks, 5) White shower curtain and hooks.

TOP VIEW



DUE TO THE NATURE OF THE MATERIALS
DIMENSIONS MAY VARY ± 1/2"

Job Name:		AQUARIUS	
Model No.: G 4897 BF MODIFIED WITH A 1 3/4' THRESHOLD, 1 1/2" DIAMETER GRAB BAR & PADDED FOLD UP SEAT		Drawing#: G489710	
Approved by:	Date Approved:	Date: 7-23-96 Revised: 1-10-06	
Rep.:	Wholesaler:	Quote No.:	

PRAXIS INDUSTRIES, LLC.
 435 INDUSTRIAL RD - SAVANNAH, TN 38372
 1 (800) 443-7269 - FAX (731) 925-4290