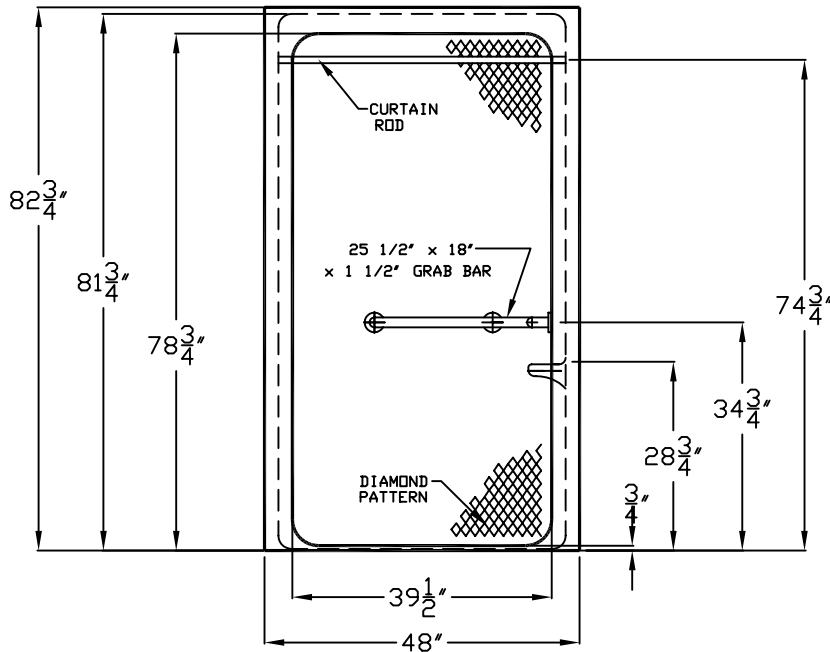


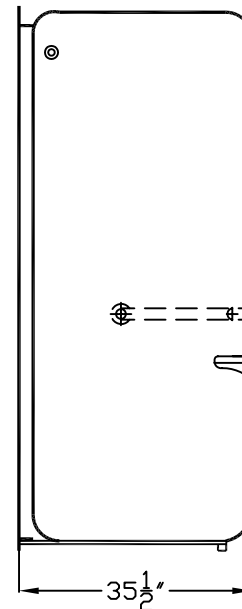
Special Needs Series

SUBMITTAL DATA

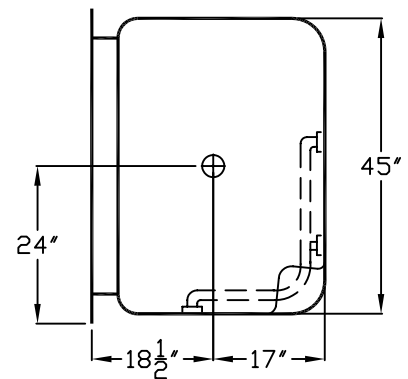
FRONT VIEW



SIDE VIEW



TOP VIEW



Accessible Shower Stall

The shower enclosure shall be Aquarius Model H 4836 BF acrylic and be molded from a single sheet so as not to have any joints or seams. It shall meet ANSI Z124.2, shall have a backside fire rating of "A" and a flame spread of less than 25 shall be designed to meet FHA, HUD, BOCA, NAHB, and shall meet the requirements of most state and national standards on design for the disabled including Southern Building Code. The unit shall have outside dimensions of 48" x 35 1/2" x 82 3/4".

The enclosure shall be equipped with the following factory installed accessories:
 1) one 25 1/2" x 18" x 1 1/2" diameter, 18 gauge stainless steel grab bar with 1 1/2" safety statute clearance, mounted with stainless steel bolts and secured from the rear with a 3" x 3" x 11 gauge metal mounting plates and, 2) 1" diameter 20 gauge stainless steel curtain rod, 3) self caulking brass drain with stainless steel strainer, 4) one molded soap tray above floor in corner, 5) diamond pattern on back wall 6) 3/4" threshold.

Available Options: 1) molded seat, 2) Dome light, 3) Hand held shower set (includes: hand set, 60" flex hose, swivel connector, vacuum breaker, brass nipple, lock nut and shower wall outlet, wall brackets), 4) 24" or 30" slide bar, 5) Pressure balance valve, 6) Green shower curtain, anti-bacterial, and hooks, 7) White shower curtain and hooks, 8) Painted applied textured floor.

DUE TO THE NATURE OF THE MATERIALS DIMENSIONS MAY VARY ± 1/2"

Job Name:

AQUARIUS

Model No.: H 4836 BF MODIFIED WITH L-SHAPED GRAB BAR & LESS MOLDED SEAT

Drawing#: H4836154

Approved by:

Date Approved:

Date: 7-19-96 Revised: 1-9-06

Rep.:

Wholesaler:

Quote No.:

PRAXIS INDUSTRIES, LLC.
 435 INDUSTRIAL RD - SAVANNAH, TN 38372
 1 (800) 443-7269 - FAX (731) 925-4290